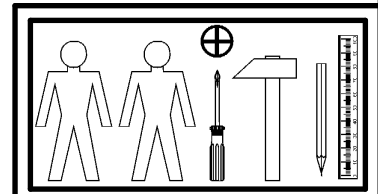
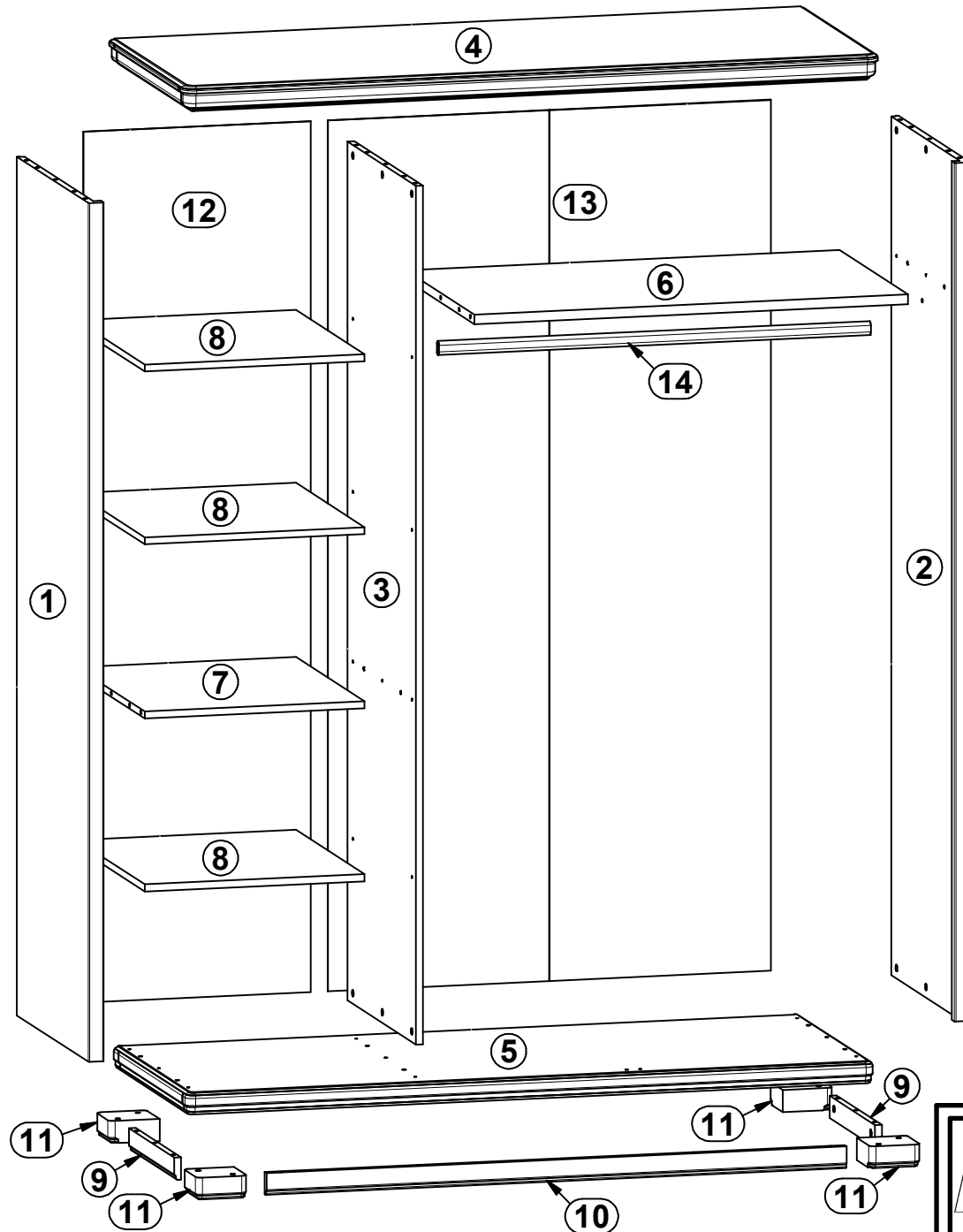
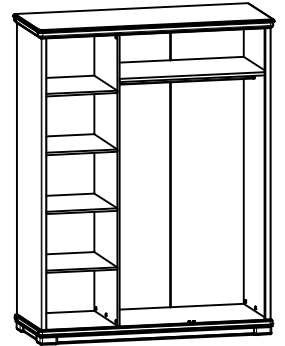


CHARLOTTA

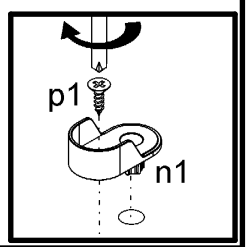
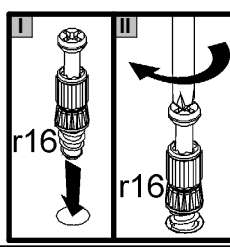
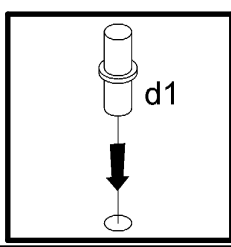
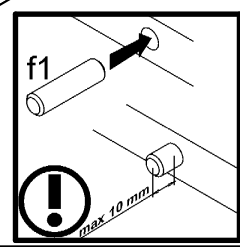
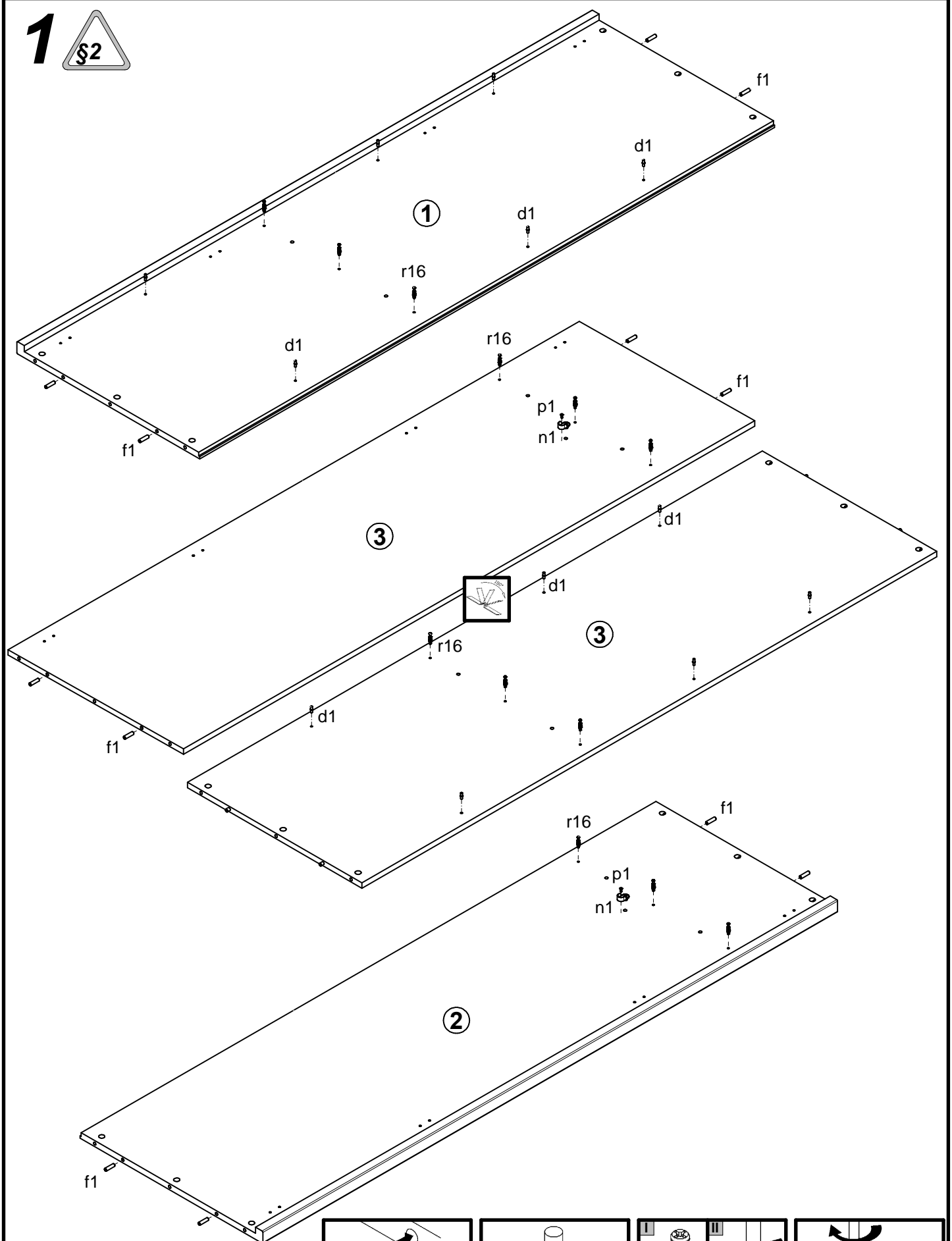
S96-SZF3D/21/16

A	B	C	D	A	B	C	D		
1	S96-119	1962	624	2/4	8	S96-319	511	595	3/4
2	S96-120	1962	624	2/4	9	S96-408	393	51	3/4
3	S96-125	1962	595	3/4	10	S96-409	1350	51	3/4
4	S96-211	1622	650	1/4	11	S96-550	117	117	1/4
5	S96-212	1600	637	1/4	12	S96-909	1990	529	2/4
6	S96-307	1009	595	3/4	13	S96-9904	1990	1031	2/4
7	S96-308	511	595	3/4	14	dr-1002	1002	30	3/4

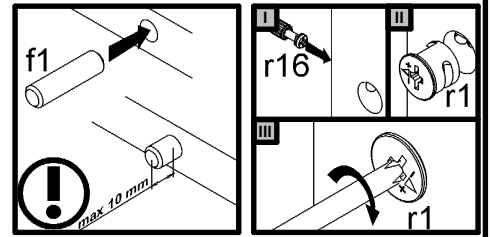
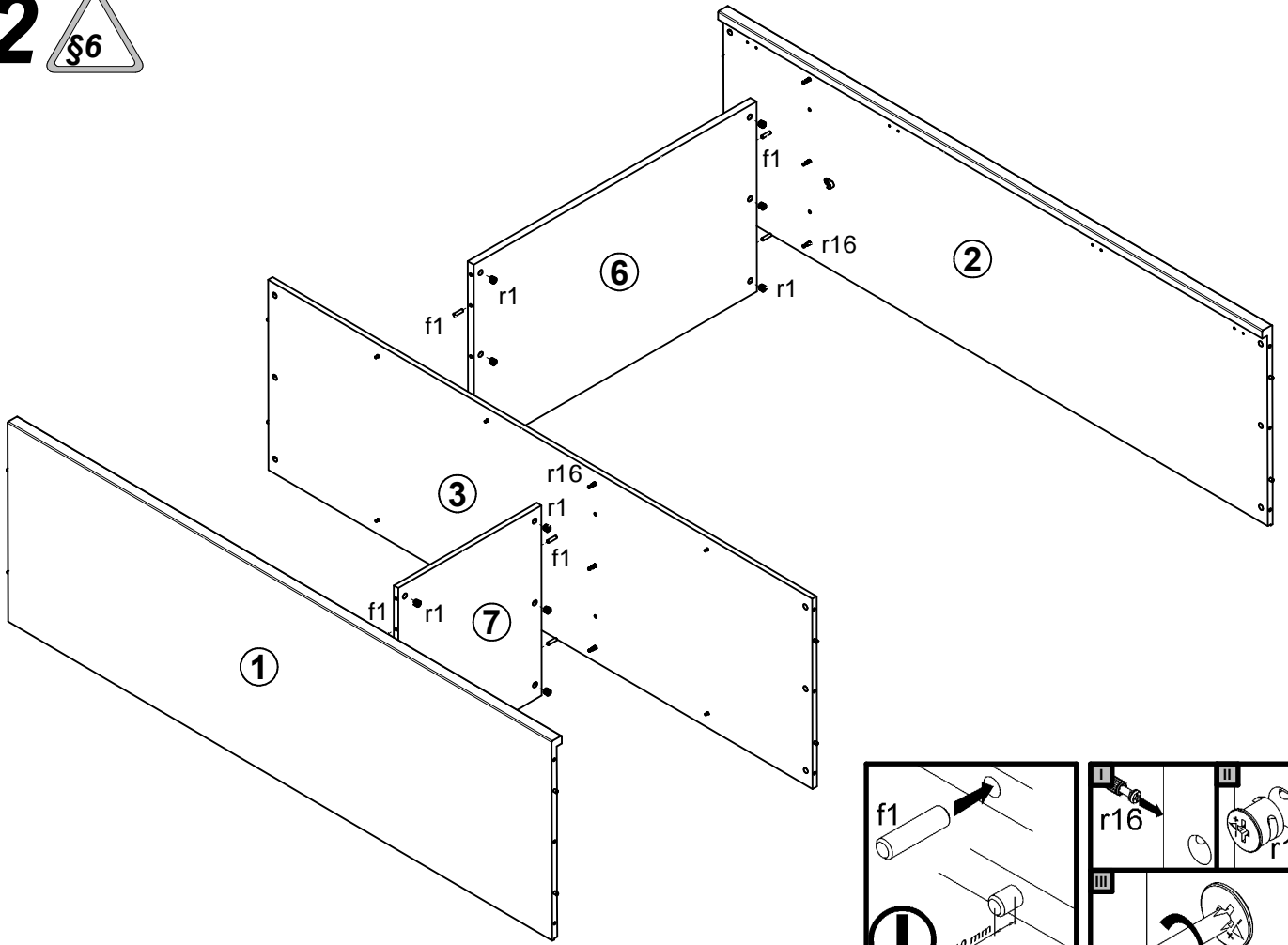


12x φ8x17 mm d1	2x φ6,3x15 mm d4	24x φ8x30 mm f1	8x φ10x40 mm f27	135x l1	2x n1	2x φ3,5x13 mm p1	37x φ1,5x12mm #16 r1	37x r16
30x ø16 s2	1x n26\1	1x φ3,5x16 mm p38	1x GLUE y1					

1



2 



3

